

# CISER

Cornell Institute for Social and Economic Research  
A LEADER IN SOCIAL SCIENCE DATA AND COMPUTING



# Connecting the Dots with DDI

A. Michelle Edwards

NADDI 2015

Madison, Wisconsin

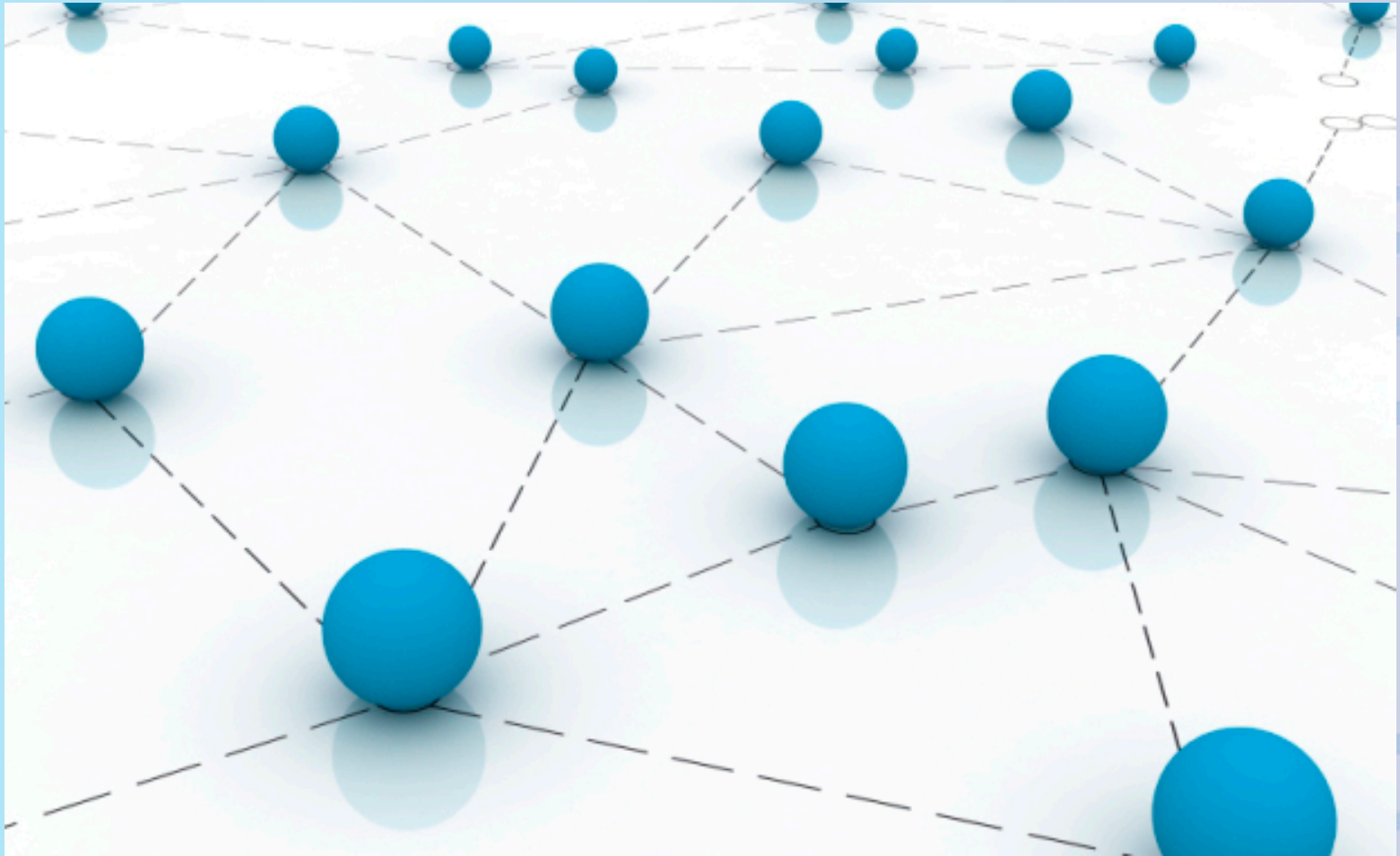
April 10, 2015



Cornell University



# CISER



# CISER



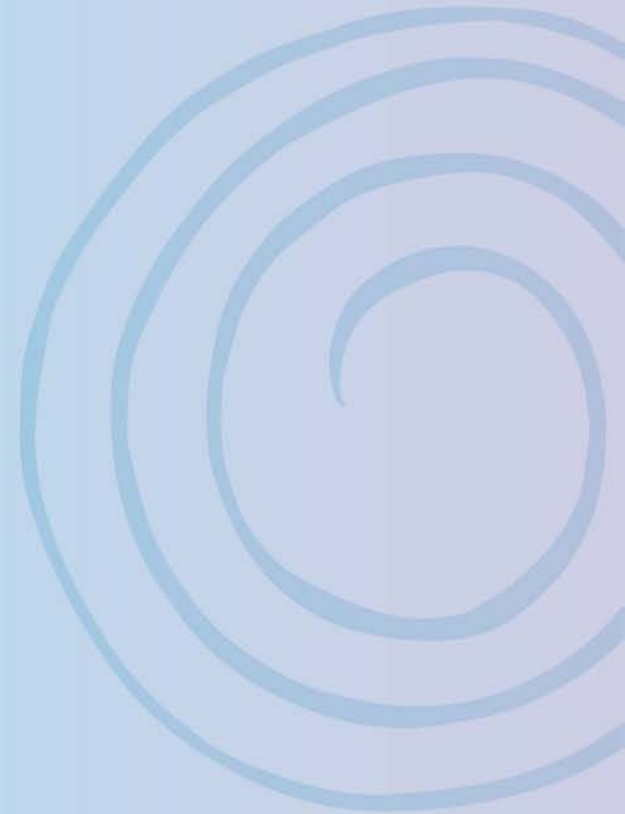
Photo credit: A. Michelle Edwards, 2012

# CISER

The first “DOT”



The CISER Data Archive



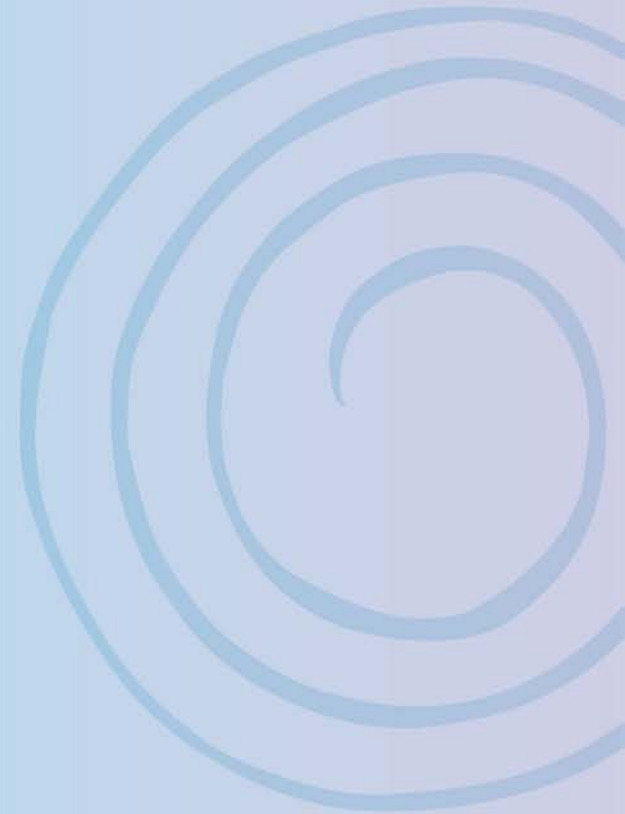
## CISER Data Archive

- Created in 1981
- Social and Economic data
- Researcher data
- Downloadable files



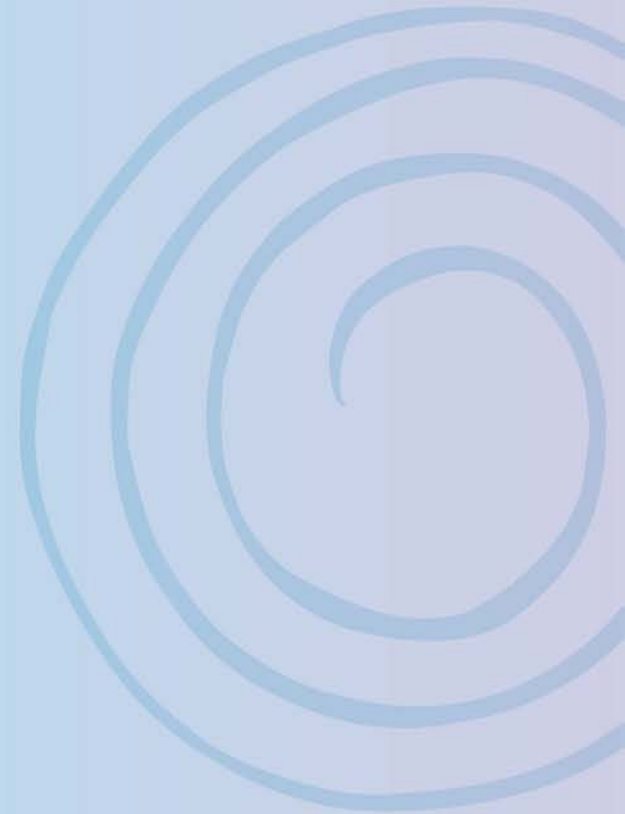
## CISER Data Archive

- Available Study level metadata:
  - Title
  - Abstract
  - Producer
  - Distributor
  - Time period
  - Study Identifier



## CISER Data Archive

- Available File level metadata:
  - Name of the file
  - File type:
    - Documentation
    - File Layout
    - Data
    - Questionnaire
  - Format
  - Notes



## Current search

- Is restricted to ONLY the Study level metadata fields
- Example:
  - “labor”
    - Results will include labor in title, abstract, OR producer “Labor”atory

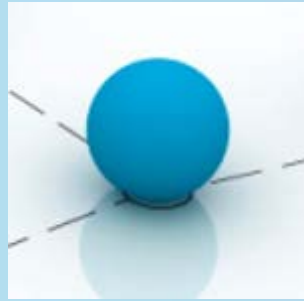


## New Metadata

- Subjects or Categories
- Updated Abstracts
  - May include Methodology metadata
- Variable level metadata
  - Created directly from formatted datasets

# CISER


The second “DOT”



CED<sup>2</sup>AR



## CED<sup>2</sup>AR

- “...designed to improve documentation and discoverability of both public and restricted data...”
  - Based in DDI – 2.5
  - Web application
  - Metadata editor
- 
- A decorative graphic consisting of several concentric, light blue circles of varying radii, centered on the right side of the slide. The circles are slightly offset from each other, creating a spiral-like effect.

## Search using CED<sup>2</sup>AR

- Search Study level metadata
- Search Variable level metadata

**Search ACROSS Studies and Variables**

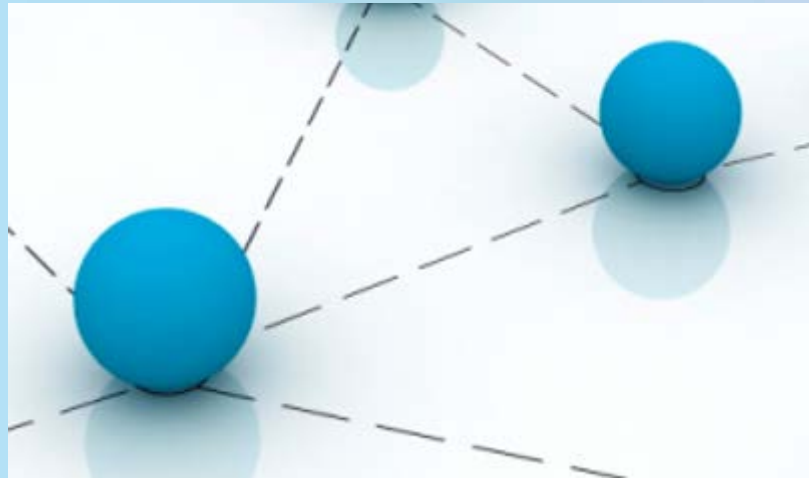
A decorative graphic consisting of several concentric, light blue circles is positioned on the right side of the slide, partially overlapping the text area.

## New Search

- Example
  - “labor”
    - Results will now include variables, their labels, and any associated descriptions
    - Results will include a list of variables from all surveys
      - Users can evaluate the similarities and the differences, review the documentation and categories, and select the most appropriate variable and survey for their analysis

# CISER

Starting to connect the “DOTS”



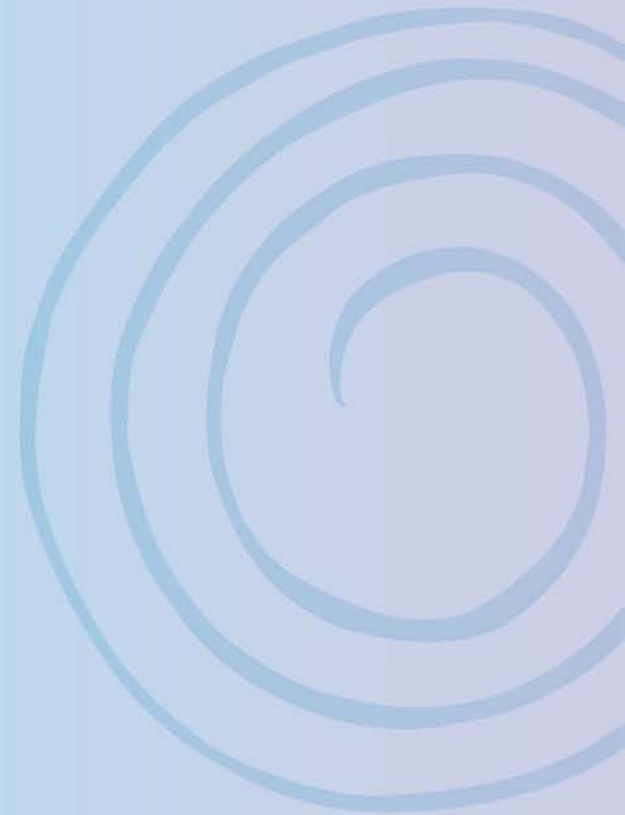
Searchable DDI Metadata from  
CISER Archive using CED<sup>2</sup>AR

# CISER


The third “DOT”



New Data Deposits

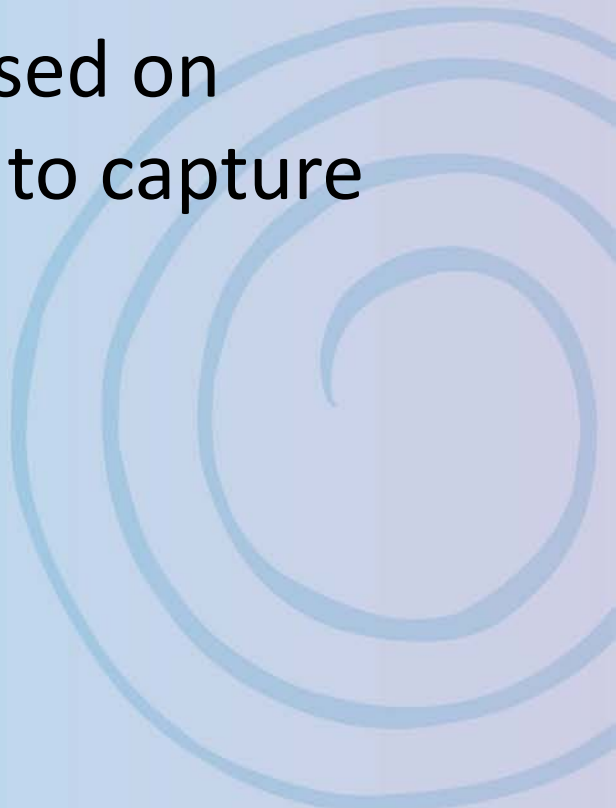


## Current Process

- Several steps
  - At least 2 staff members are involved
  - Limited Study Level metadata
  - Database entry forms
  - New metadata uses a separate form
- 
- A decorative graphic consisting of several concentric, light blue circles is positioned on the right side of the slide, partially overlapping the text area.

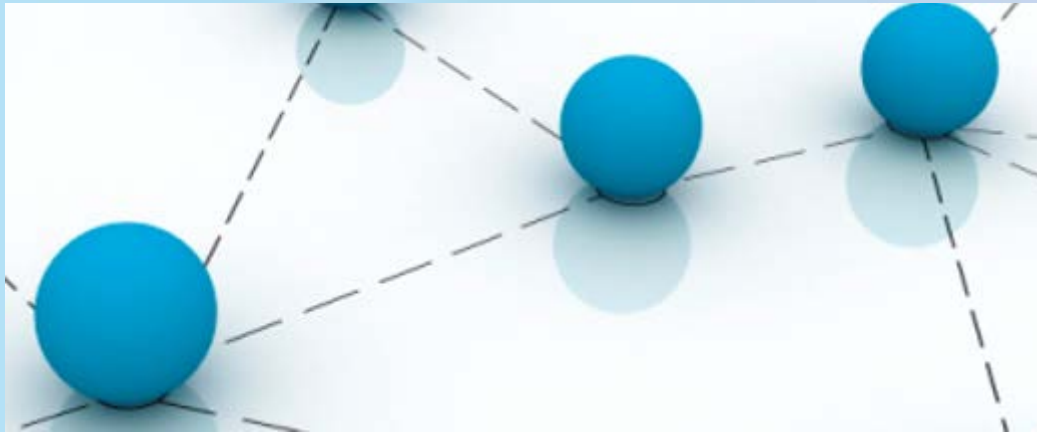


## New Process

- CED<sup>2</sup>AR – metadata editor
  - Develop new Deposit form – based on OpenICPSR's Data Deposit form to capture Study and File Level metadata
- 
- A decorative graphic consisting of several concentric, light blue circles of varying radii, centered on the right side of the slide. The circles are slightly faded and overlap each other, creating a spiral-like effect.

# CISER

## Continuing to connect the “DOTS”



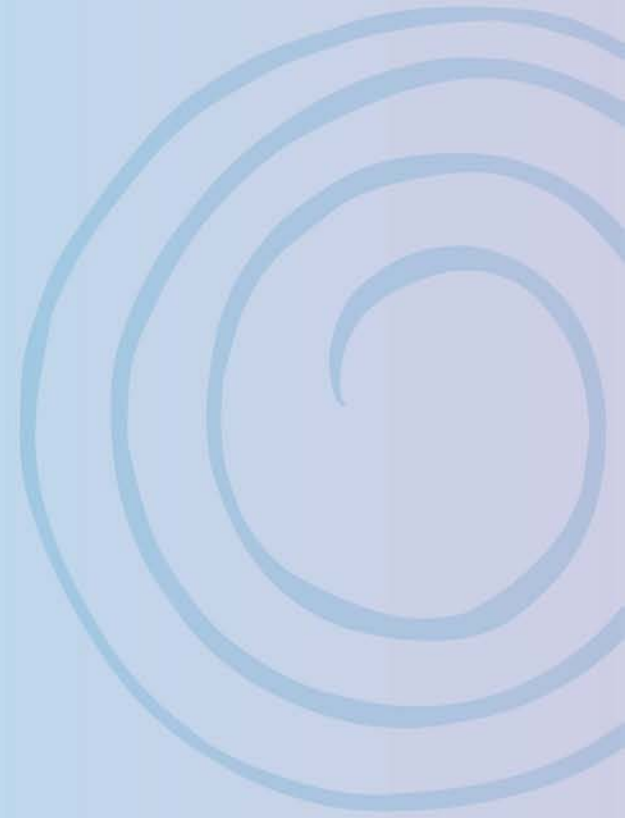
- Searchable DDI Metadata from CISER Archive using CED<sup>2</sup>AR
- New Data Deposits

# CISER

The last “DOT”



Data Access



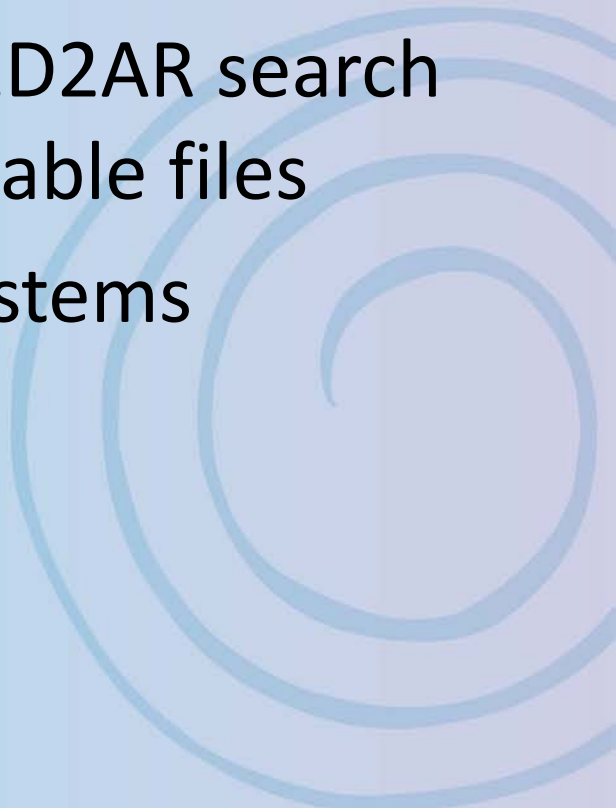
## Moving forward - CISER Data Archive

- Metadata available and searchable in CED<sup>2</sup>AR
- Archive still houses the files

How do we link?

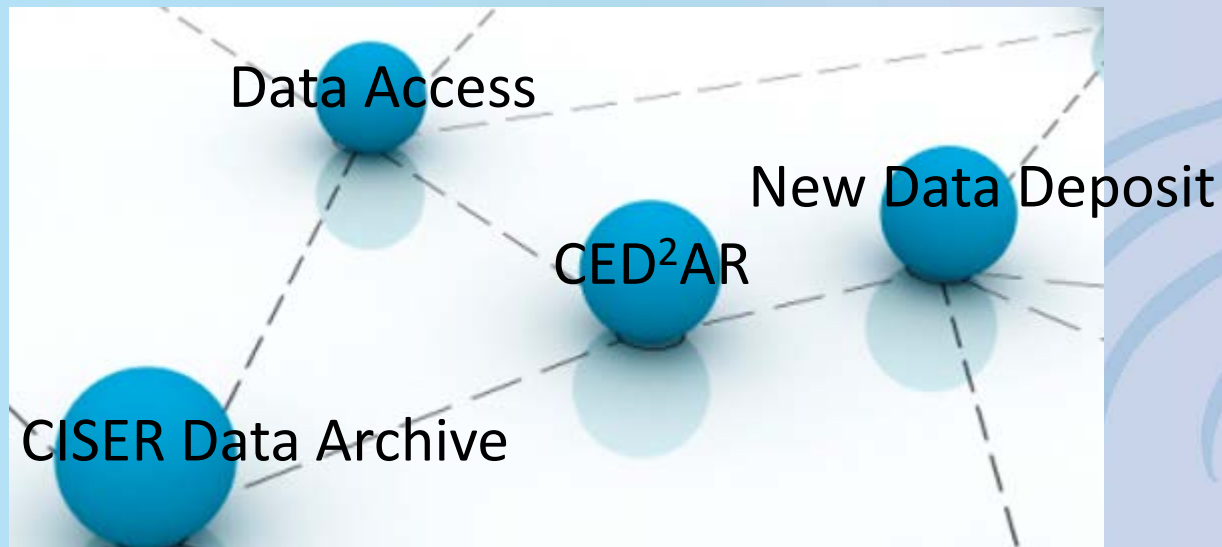


## Moving forward - CISER Data Archive

- Development of an API
  - Provide a crosswalk from the CED2AR search results to the Archive downloadable files
  - Maintain integrity of the two systems
- 

# CISER

## Connecting the Dots



# CISER



Photo credit: A. Michelle Edwards, 2012

## What is next? Or rather WHO is next?

- Introductory meetings with:
  - National Data Archive on Child Abuse and Neglect (NDACAN)
  - Employment and Disability Institute (EDI)
- Looking for folks beyond Cornell – any takers?



# CISER

Cornell Institute for Social and Economic Research  
A LEADER IN SOCIAL SCIENCE DATA AND COMPUTING



Thank you!

Questions?

[ame87@cornell.edu](mailto:ame87@cornell.edu)

[www.ciser.cornell.edu](http://www.ciser.cornell.edu)



Cornell University